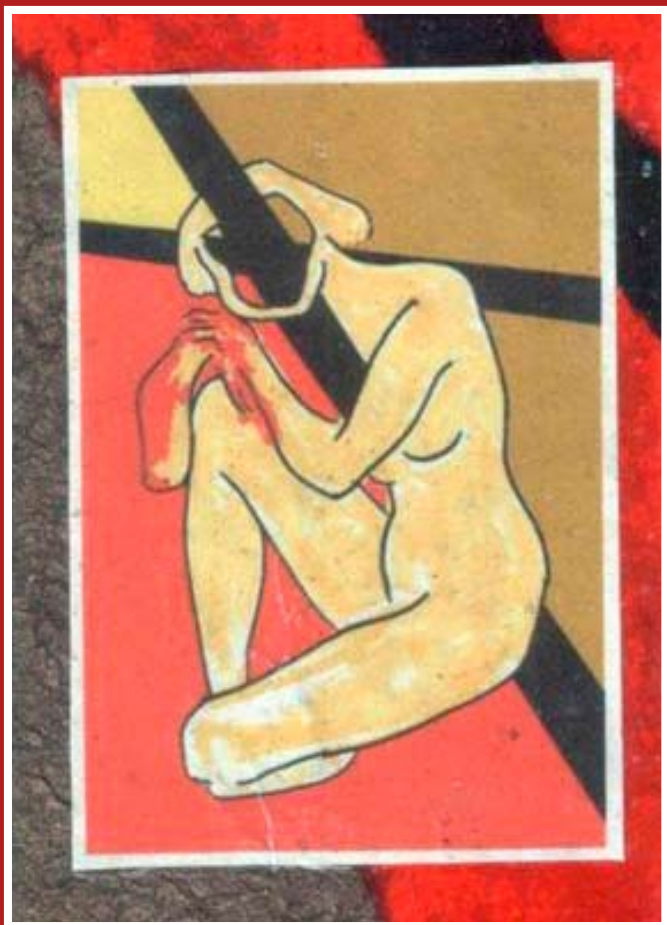


WORLD PSYCHIATRIC ASSOCIATION
الجمعية العالمية للطب النفسي
世界精神病学协会
ASSOCIATION MONDIALE DE PSYCHIATRIE



WELTVERBAND FÜR PSYCHIATRIE
ASSOCIAÇÃO MUNDIAL DE PSIQUIATRIA
ВСЕМИРНАЯ ПСИХИАТРИЧЕСКАЯ АССОЦИАЦИЯ
ASOCIACIÓN MUNDIAL DE PSIQUIATRÍA

WPA Section on Art and Psychiatry presents



ART EXHIBITION

Temptation of Evil: Aggression, Violence and Self

6th European Congress on Violence in Clinical Psychiatry
Stockholm, Sweden, 22-24 October 2009

Curators: Drs. Hans-Otto Thomashoff, Ekaterina Sukhanova
Venue: 'Lilla Teatern' – Folkets Hus

INTRODUCTION

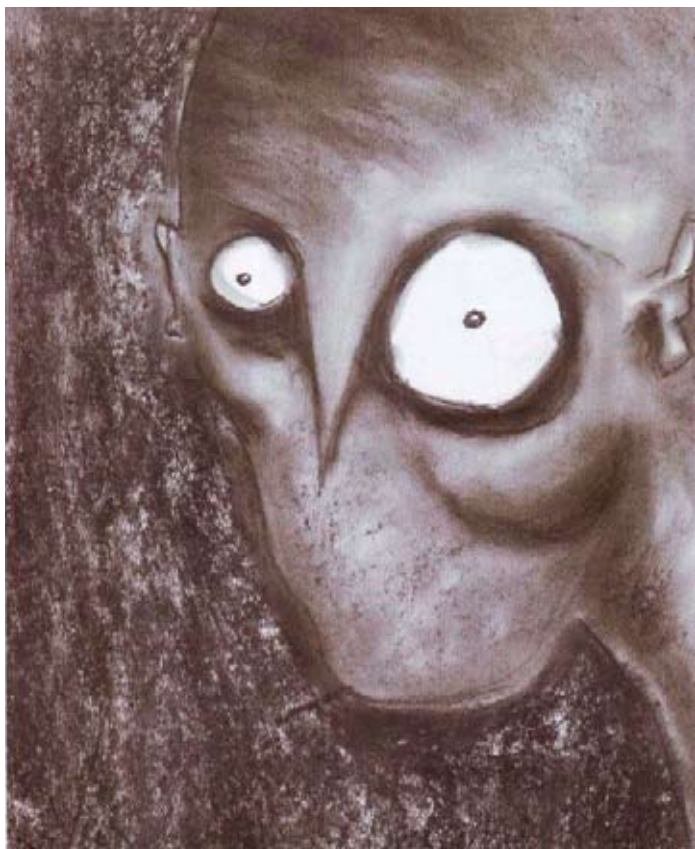


Today when we are constantly reminded of the dangers of thinking in exclusive terms, art affords us a model of dialogue in which the other is accepted as an equal conversation partner. Art fosters cooperative communication in which dignity and individuality of a mental health patient may be reaffirmed. At the same time, art allows for critical distance, retrospection, and vast opportunities for individual choice, and thus may be conducive to an improved self-image and self-esteem.

This exhibit is meant to celebrate creativity as a force that transcends illness and has the potential to counteract aggression. Focusing on psychiatric art, it brings together about 80 artworks from various cultures across the globe, including artists represented in museums and galleries as well as those working in hospitals or even in hidden isolation:

- artist who worked through his psychiatric illness and became successful (Lachman)
- artist who used his psychiatric illness creatively (Heikenwälder)
- artist who works in hidden isolation (Müllerh)
- group of artists (chronic) that is successfully marketed and just received the status of a renowned museum (Gugging)
- artists who are suffering from the stigma in their society and therefore remain anonymous (Japan)
- artists who work within the framework of a rehabilitation program. (Living Museum, USA)
- artists who work and develop new techniques independently (Reinhardt)
- artist who uses the style of art brut to be marketed more successfully (Petrea)

Reproductions of many artworks presented at the exhibit may be found in *The Person in Art: Conceptual and Pictorial Frames on Art and Mental Health*. Thomashoff, H-O., and Sukhanova, E., eds. Nova Publishers, USA, 2008. www.novapublishers.com





PROGRAM

Thursday 22 October

13.30 – 13.45

10.00 – 18.00

Official Opening & Guided Tour by
Curators

Friday 23 October

15.30 – 16.00

08.30 – 18.00

Lecture: "Art as a product of thinking"
by Dr. Hans-Otto Thomashoff

16.00 – 16.30

Lecture: "Semiotic Mechanisms on Art"
by Dr. Ekaterina Sukhanova

Saturday 24 October

11.00 – 11.30

08.30 – 16.00

Lecture: "Roots of Human Aggression"
by Dr. Hans-Otto Thomashoff

11.30 – 12.00

Lecture: "Mental Health and Violence on
Campus" by Dr. Ekaterina Sukhanova

A number of works at this exhibit is presented with the kind permission of the "Living Museum," an art studio and gallery at the Creedmoor Psychiatric Center in New York City.

Creedmoor Psychiatric Center in New York was the first hospital in the US to systematically collect and produce art by people with mental illness. The Living Museum is an integrated part of the rehabilitation services and receives its institutional support from the facility, which provides all the patients/artists with psychiatric care. Many artists keep in touch even after their discharge from the hospital.

Dr. Janos Marton, the founder and Director of the Living Museum, says: "At the Living Museum there is a celebratory aspect to the way we view mental illness that does not minimize the horror of the condition." Self-transformation is the objective of all art, and the artists at the Living Museum no less than others. (Source: Journey of Hope: Artwork From the Living Museum. A space For Art and Healing. Creedmoor Psychiatric Center 2002.)



Richard Smith (born 1947)

St. Germaine, 2006
Watercolor
The Living Museum, USA

Richard Smith (born 1947)

Man, Metaphysics and Its Subtleties,
2006 - Watercolor
The Living Museum, USA

Issa Ibrahim (born 1965)

Anxiety Gnome, 2006
Colored pencil on paper -
The Living Museum, USA

John Tursi (born 1961)

Agony Hand, 2006
Mixed media on paper
The Living Museum, USA

Heinz Müllerh (born 1953)

My Resurrection, 1993
Ink and watercolor on paper
Private Collection, Germany

Heinz Müllerh (born 1953)

Untitled (Portrait), 2002
Ink and watercolor on paper
Private Collection, Germany

Hugo Heikenwaelder (born 1949)

Crusade, 1982
Color pencil on paper
In the possession of the artist, Austria

Hugo Heikenwaelder (born 1949)

Death, 1980
Pencil on paper
In the possession of the artist, Austria

Amber Spooner (born?)

Sleep, 2008
Ink on Paper
Private Collection, Canada

David Woods (born?)

Owl Guard, 2007
Marker on paper, 2007
Private Collection, Canada

Andrew Mass (born 1963)

Self-Portrait (Skiing), 2008
Acrylic Paint on Cardboard -
Private Collection, USA

Andrew Mass (born 1963)

I just want to be an artist, 2008
Pastel and Marker on Paper
Private Collection, USA

Andrew Mass (born 1963)

Don't be a sad owl, 2007
Mixed Media on Cardboard
Private Collection, USA

Andrew Mass (born 1963)

The Worm Man, 2007
Acrylic Paint on Cardboard
Private Collection, USA

Andrew Mass (born 1963)

Self-portrait in blue, 2008
Mixed Media on Paper
Private Collection, USA

Andrew Mass (born 1963)

The Alps, 2008
Acrylic Paint on Paper
Private Collection, USA

Tracy Reinhardt (born?)

Dr. Freud is in My Head, 2008
Mixed Media
Private Collection, USA

Tracy Reinhardt (born?)

Melancholy Trees, 2008
Mixed Media
Private Collection, USA

Tracy Reinhardt (born?)

Two Poles, 2006
Mixed Media
Private Collection, USA

"ATA," France (born?)

A Parisian Lady, 2008
Oil on Canvas
Private Collection, USA

"Diogene," France (born?)

L'artbrutiste est un brute, 2008
Ink on Paper
Private Collection, USA

Jose F. Borges, Brazil (born 1935)

Psychoanalyst, 2008
Woodcut
Private Collection, USA

Rick Petrea (born 1951)

Untitled (Women with Intestines),
Early 1990s - Collage
In the Possession of the Artist, USA

Rick Petrea (born 1951)

Gentleman With Rosehead, 2008
Collage
In the Possession of the Artist, USA